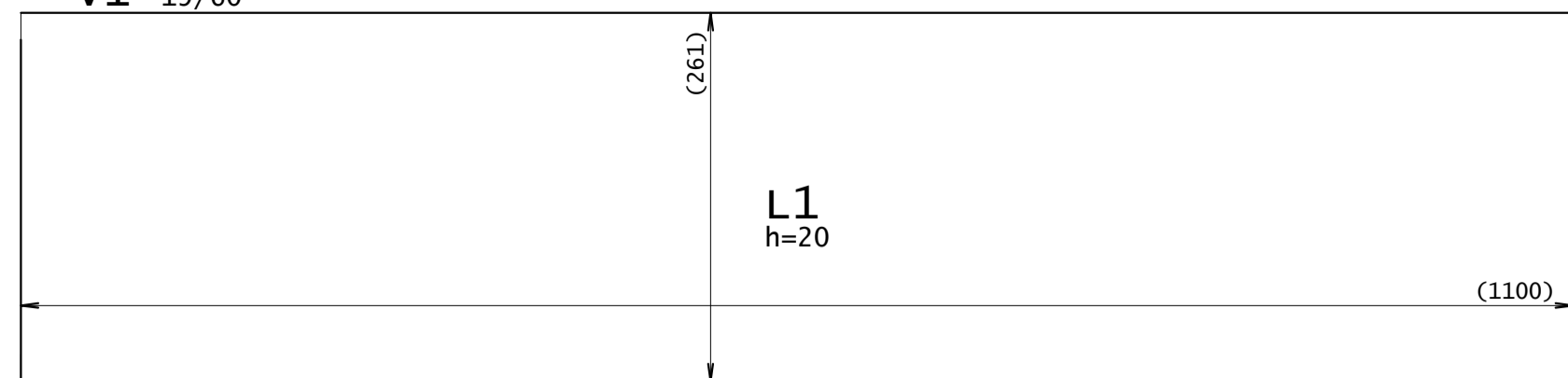


## **PROJETO ESTRUTURAL CONCRETO - RADIER**

**1-ESTRU\_RADIER RESER.INFERIORES\_R00**

V1 19/60

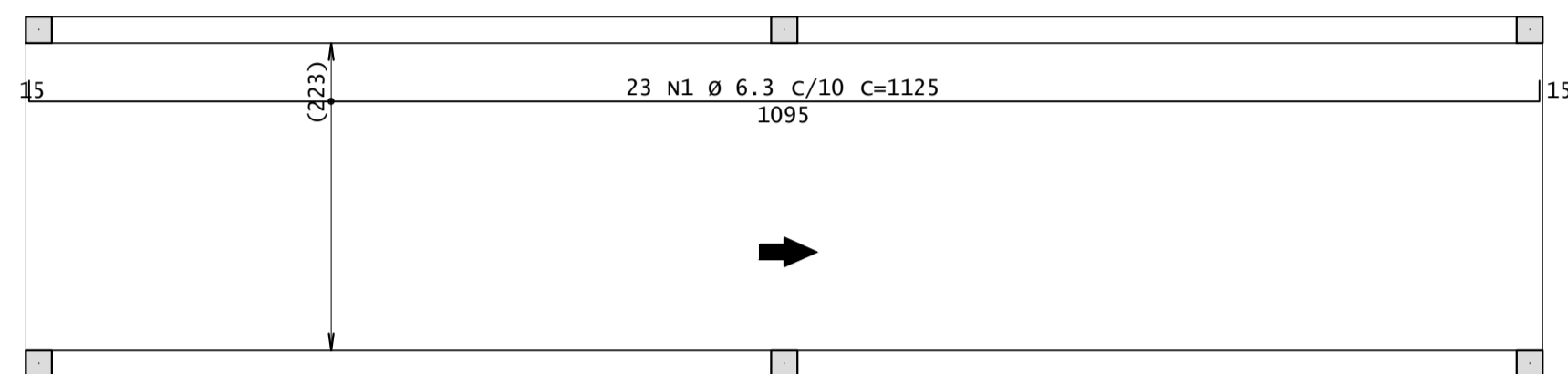


AÇO	POS	BIT	QUANT	COMPRIMENTO	
				UNIT	TOTAL
		mm		cm	cm
<b>Radier - Armadura negativa principal</b>					
50A	1	6.3	27	1165	31455
<b>Radier - Armadura negativa secundaria</b>					
50A	1	6.3	110	284	31240
<b>Radier - Armadura positiva principal</b>					
50A	1	6.3	23	1125	25875
<b>Radier - Armadura positiva secundaria</b>					
50A	2	6.3	110	284	31240

RESUMO DE AÇO			
AÇO	BIT	COMPR	PESO
		m	kgf
		mm	
50A	6.3	1198	294
<b>Peso Total</b>		<b>60A =</b>	<b>4 kgf</b>
<b>Peso Total</b>		<b>50A =</b>	<b>294 kgf</b>

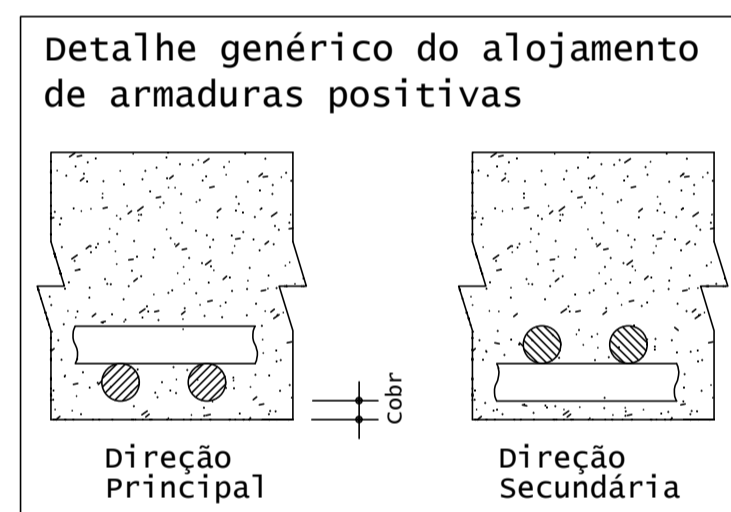
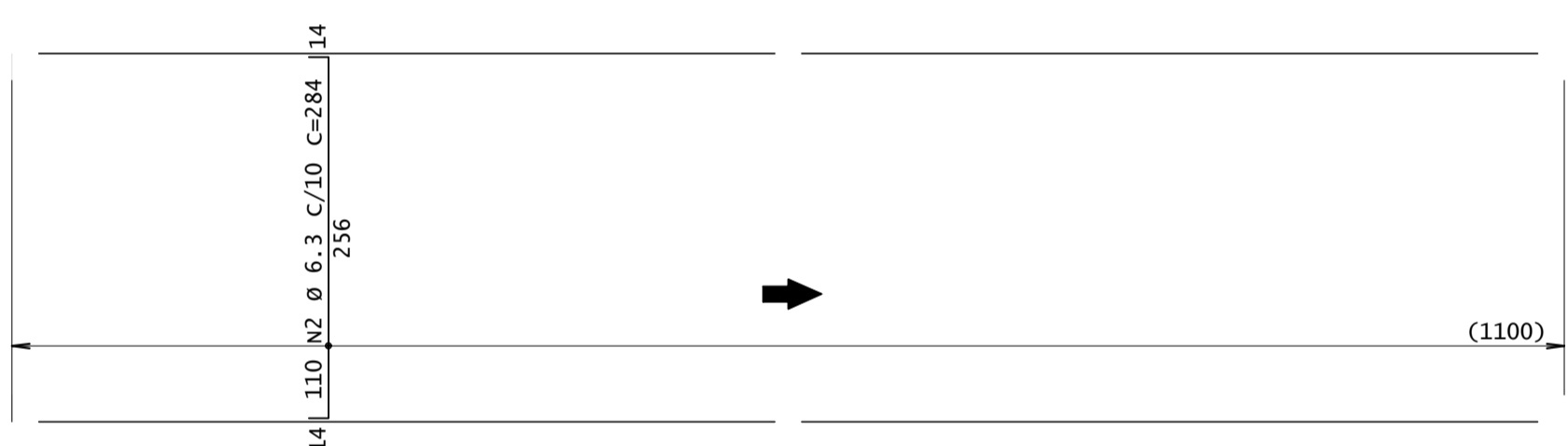
## Radier - Armadura positiva principal

1X



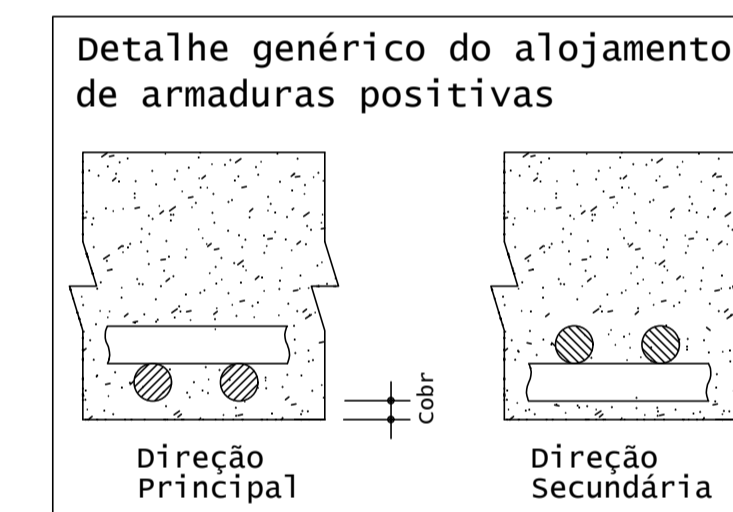
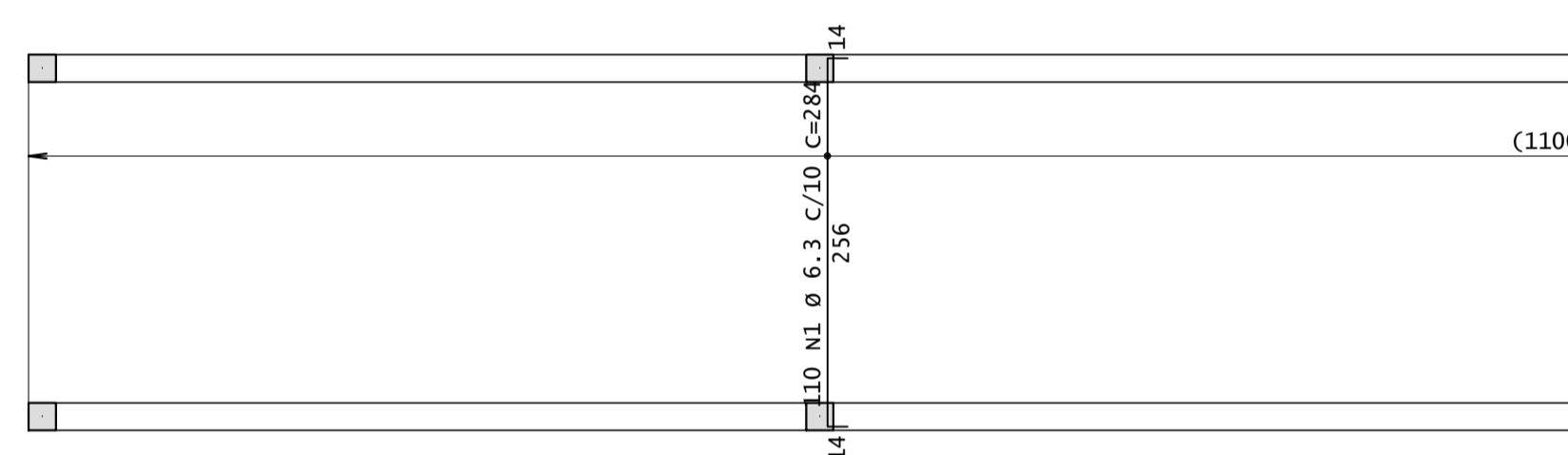
## Radier - Armadura positiva secundaria

1X

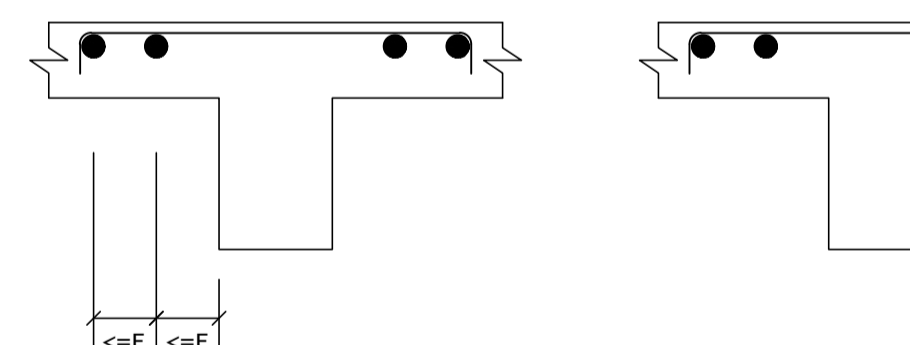


## Radier - Armadura negativa secundaria

1X

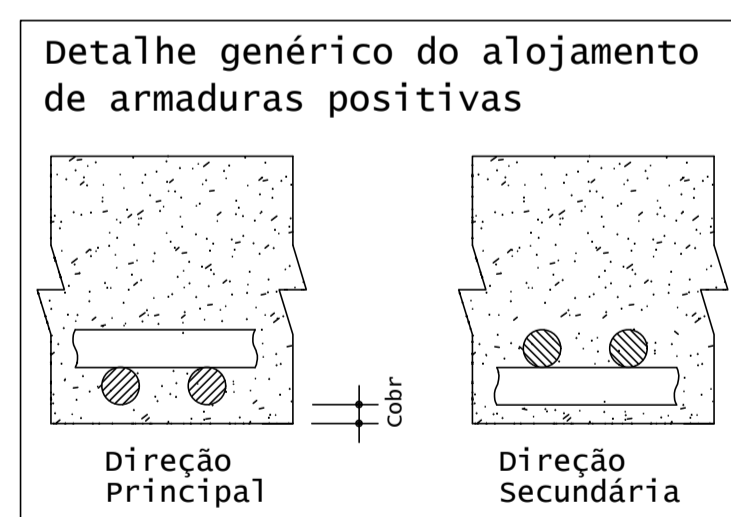
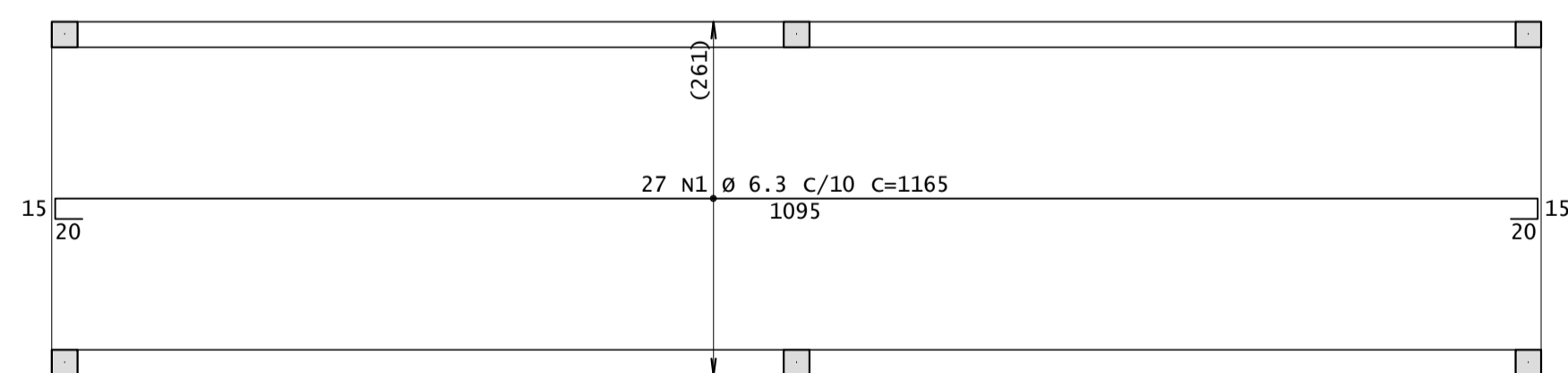


DETALHE TÍPICO DE FERROS DE DISTRIBUIÇÃO DE ARMADURA NEGATIVA

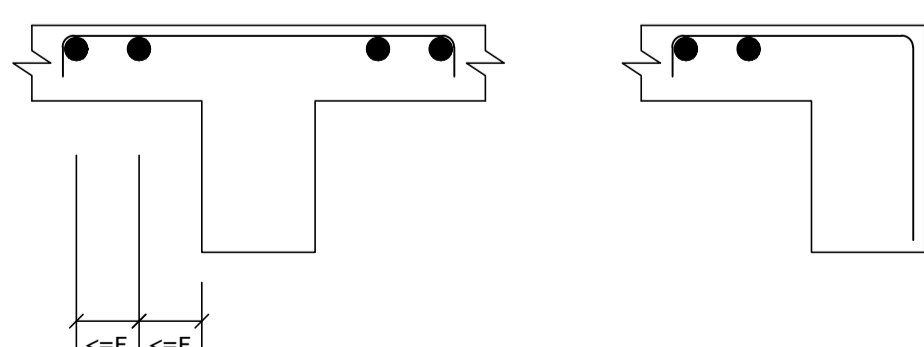


## Radier - Armadura negativa principal


1X



DETALHE TÍPICO DE FERROS DE DISTRIBUIÇÃO DE ARMADURA NEGATIVA



$F_{ck} = 30 \text{ MPa}$



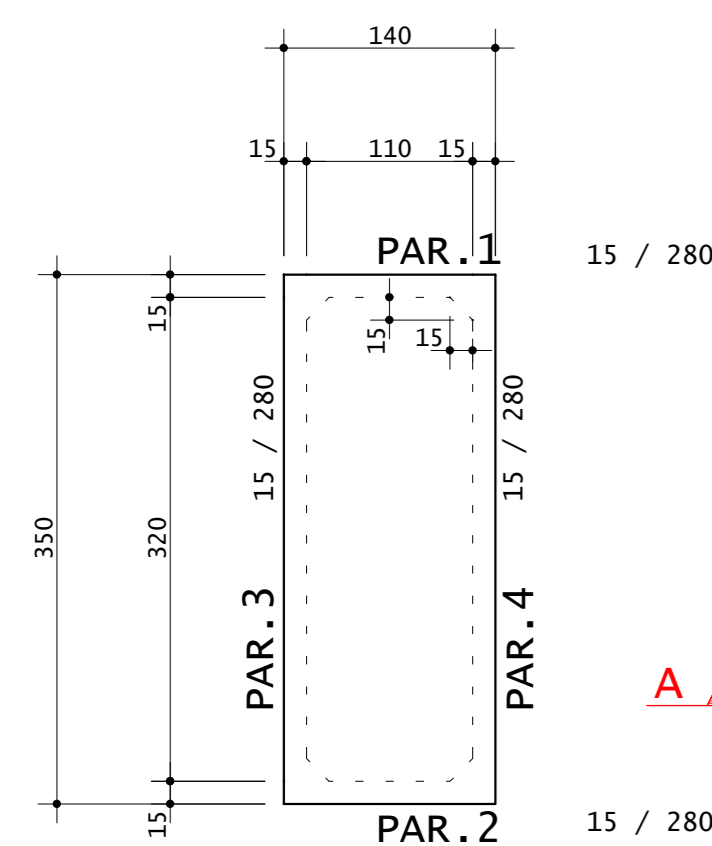
### Universidade Federal do Maranhão

Local SÃO LUÍS - MA RUA ANTÔNIO RAYOL - CENTRO		Objeto do Serviço Técnico PROJETO DE RESTAURAÇÃO E REQUALIFICAÇÃO DA FÁBRICA PROGRESSO MARANHENSE MUSEU ESCOLA E CURSO DE ARQUEOLOGIA	
Área Técnica <b>ENGENHARIA</b>	Etapa PROJETO EXECUTIVO	Discriminação RADIER DE FUNDAÇÃO DOS RESERVATÓRIOS INFERIORES	
Data <b>JUN/2021</b>	Escala INDICADA		
RESPONSÁVEL TÉCNICO: ENG. CIVIL MÁRIO A. CALHEIROS - CREA-MA 7197/D	Revisão <b>00</b>	Prancha <b>ÚNICA</b>	
PROJETO:			

**2-ESTRU\_RES\_INC\_R00**

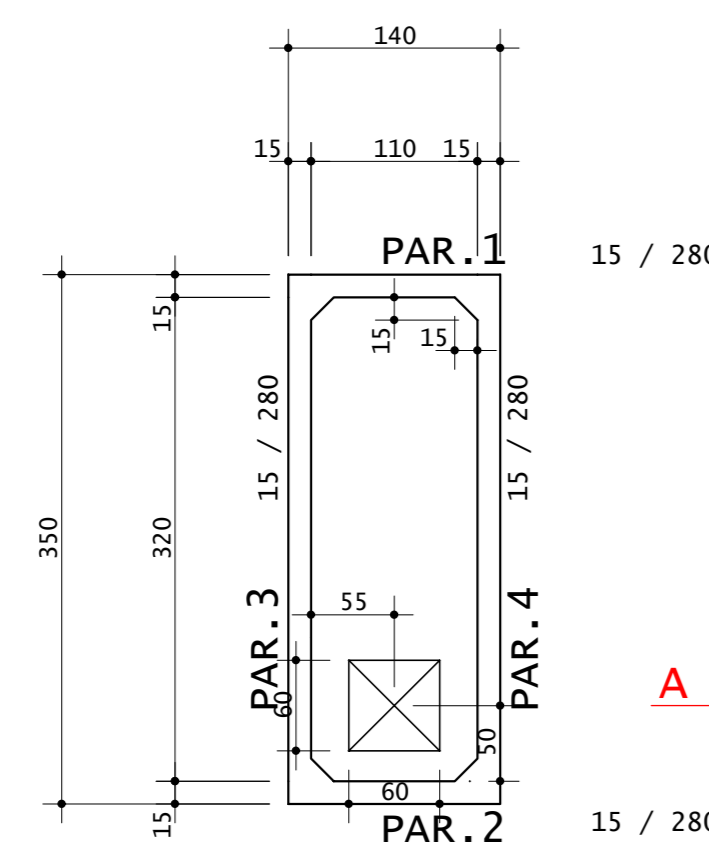
**FORMA DO FUNDO DO RESERVATÓRIO** ESCALA: 1/50

(LAJE h=15cm)

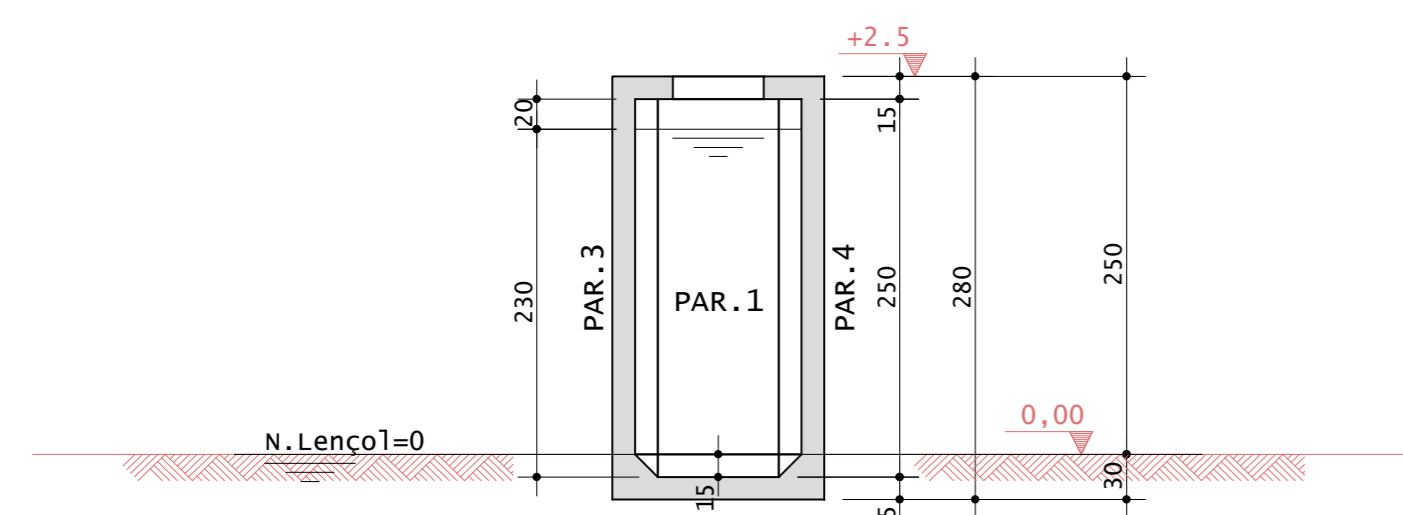


**FORMA DA TAMPA DO RESERVATÓRIO** ESCALA: 1/50

(LAJE h=15cm)

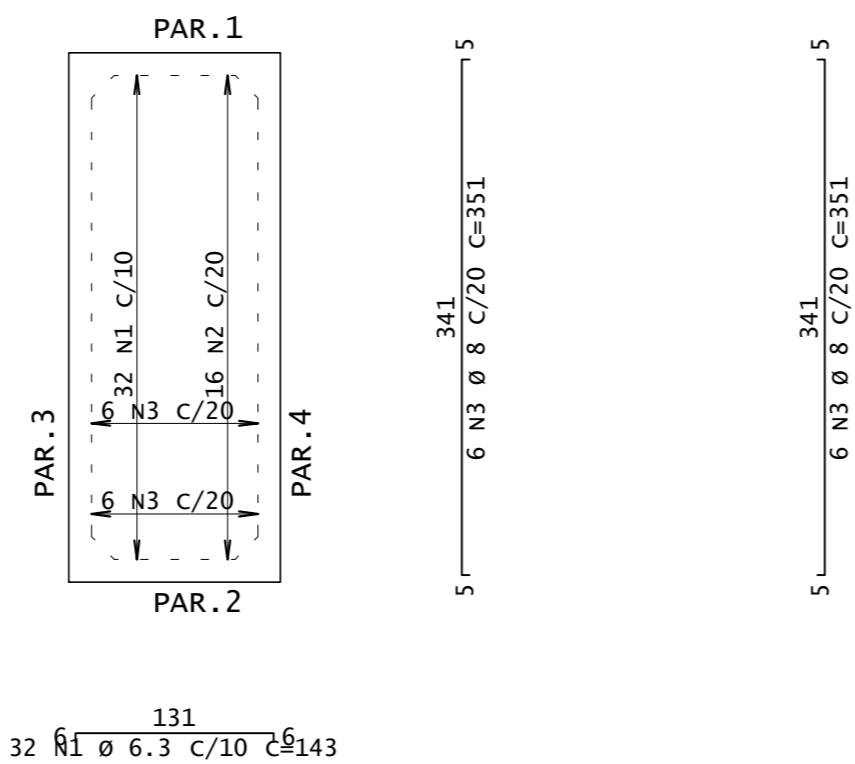


**CORTE A-A**



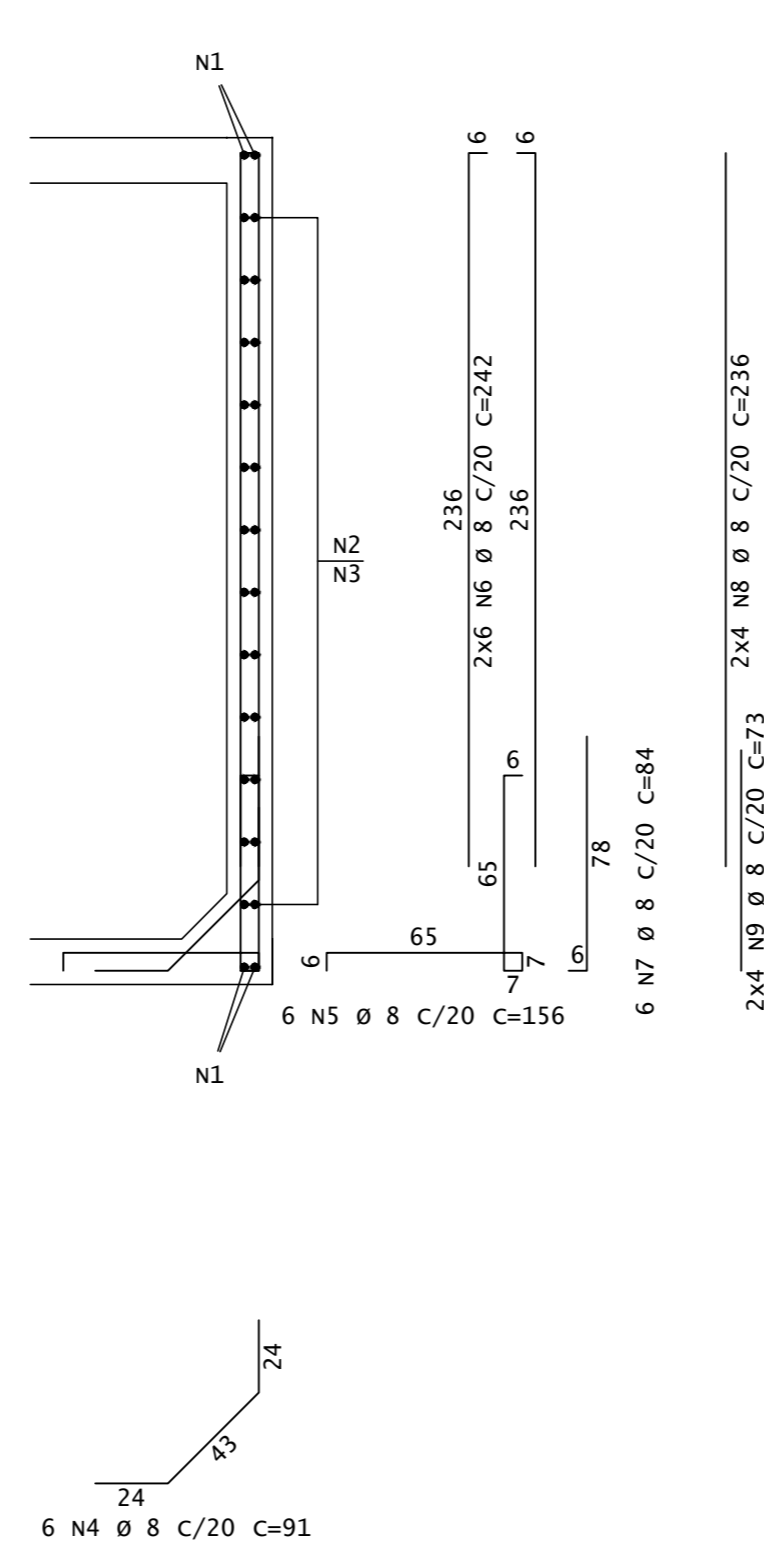
**ARMAÇÃO DO FUNDO DO RESERVATÓRIO** ESCALA: 1/50

(LAJE h=15cm)



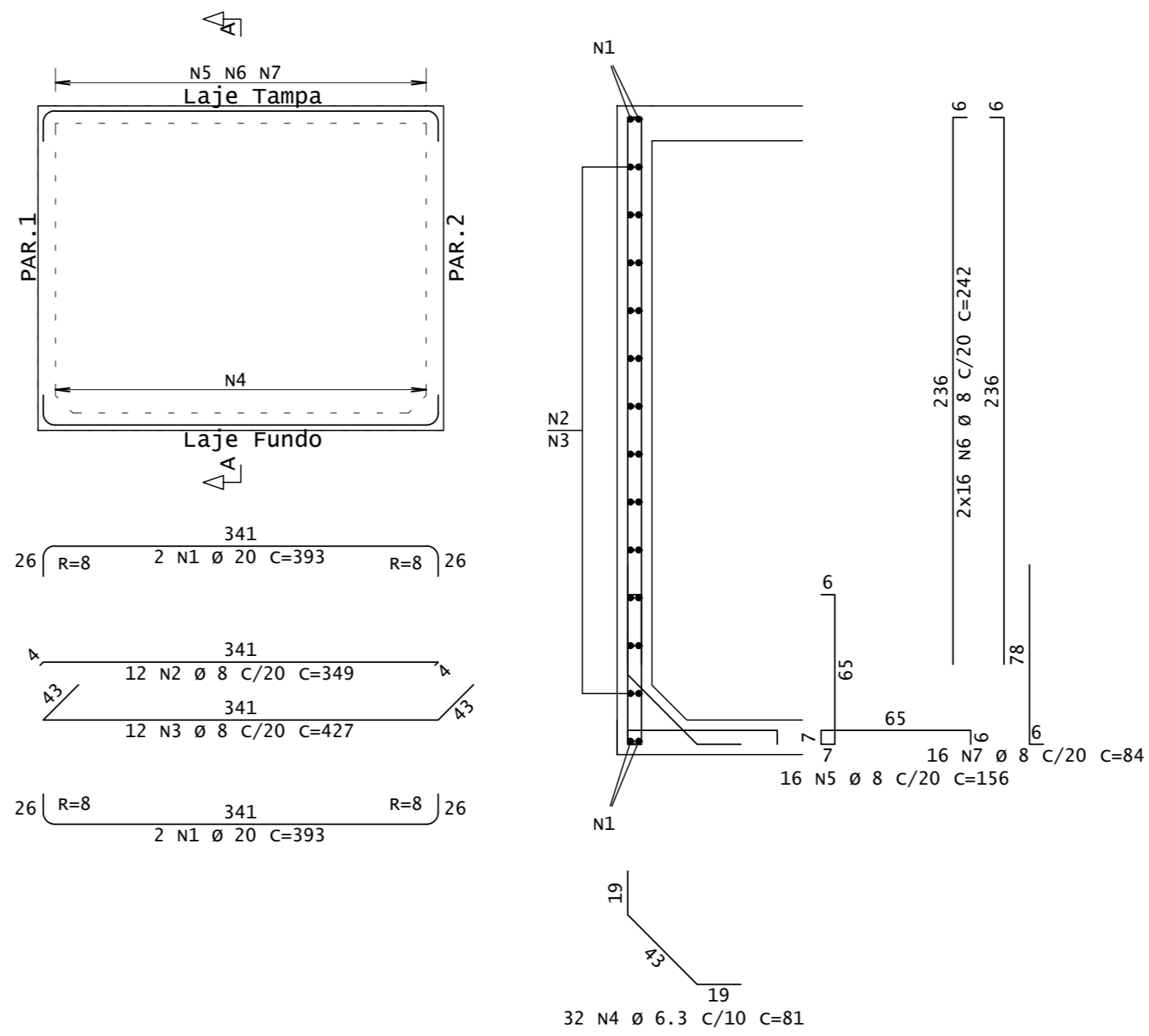
**PAR. 1** 15/280

**Corte A**



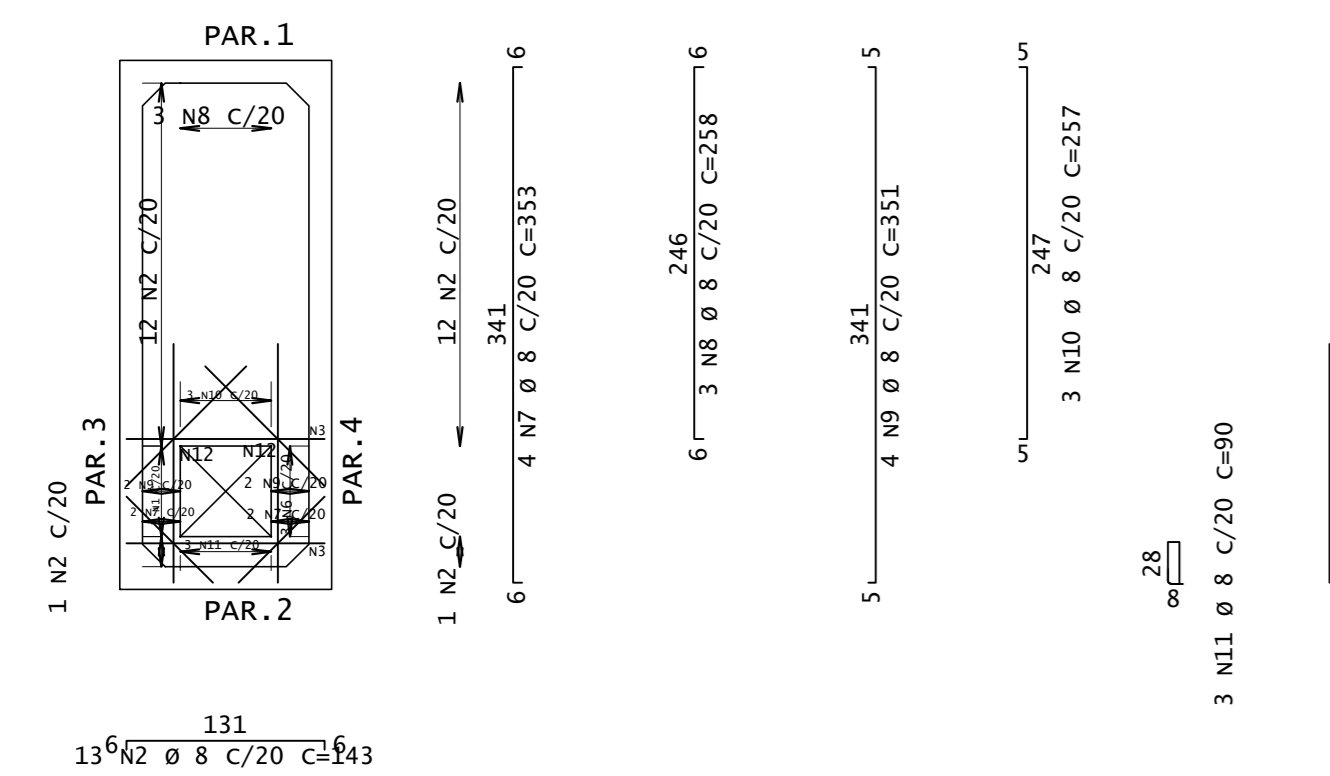
**PAR. 4** 15/280

**Corte A**

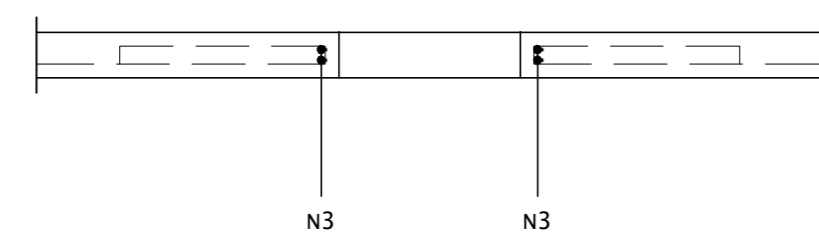


**ARMAÇÃO DA TAMPA DO RESERVATÓRIO** ESCALA: 1/50

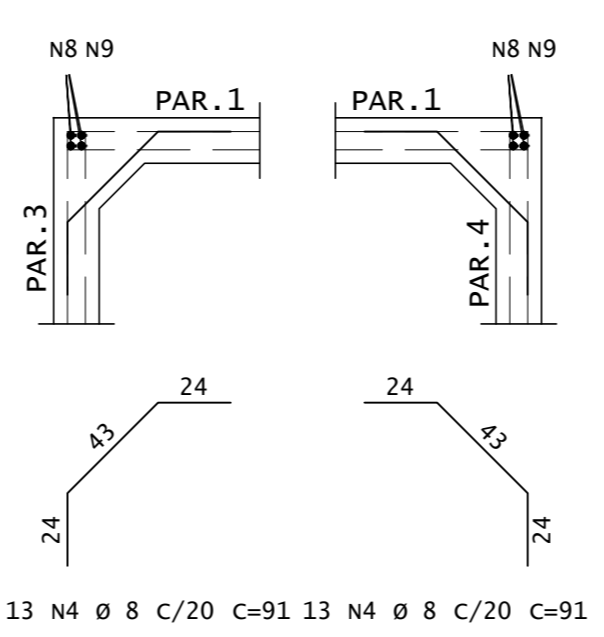
(LAJE h=15cm)



**DETALHE DA BORDA DA ABERTURA (1X)**

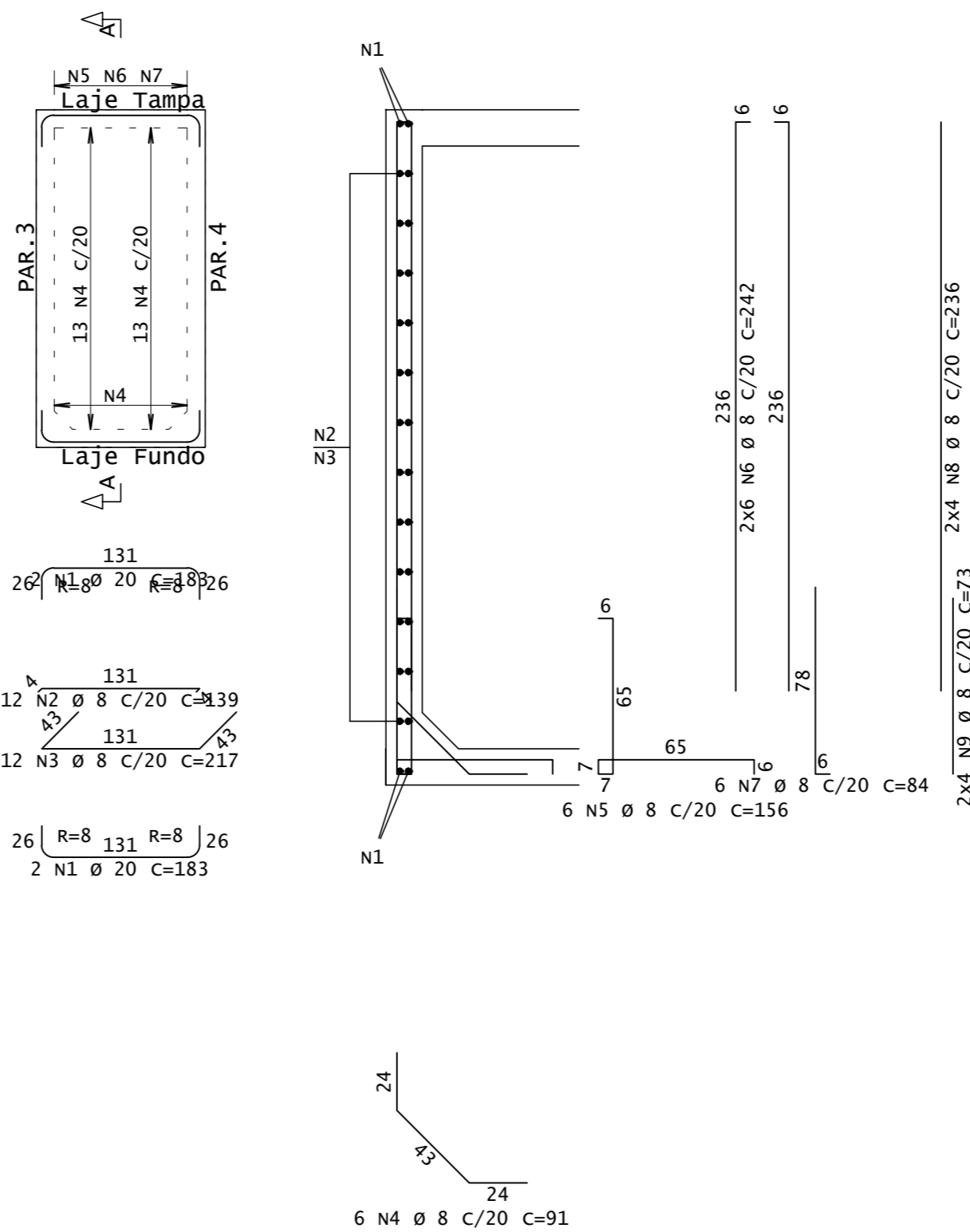


**ARM.DAS MÍSLAS VERTICAIS (Planta)**

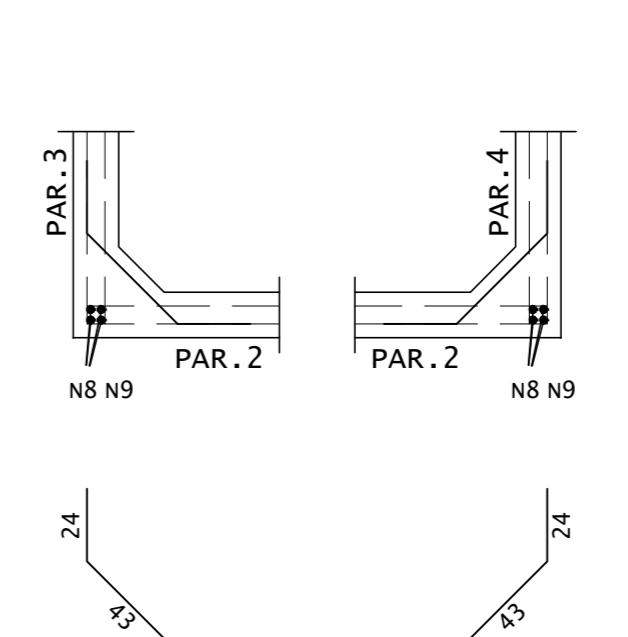


**PAR. 2** 15/280

**Corte A**

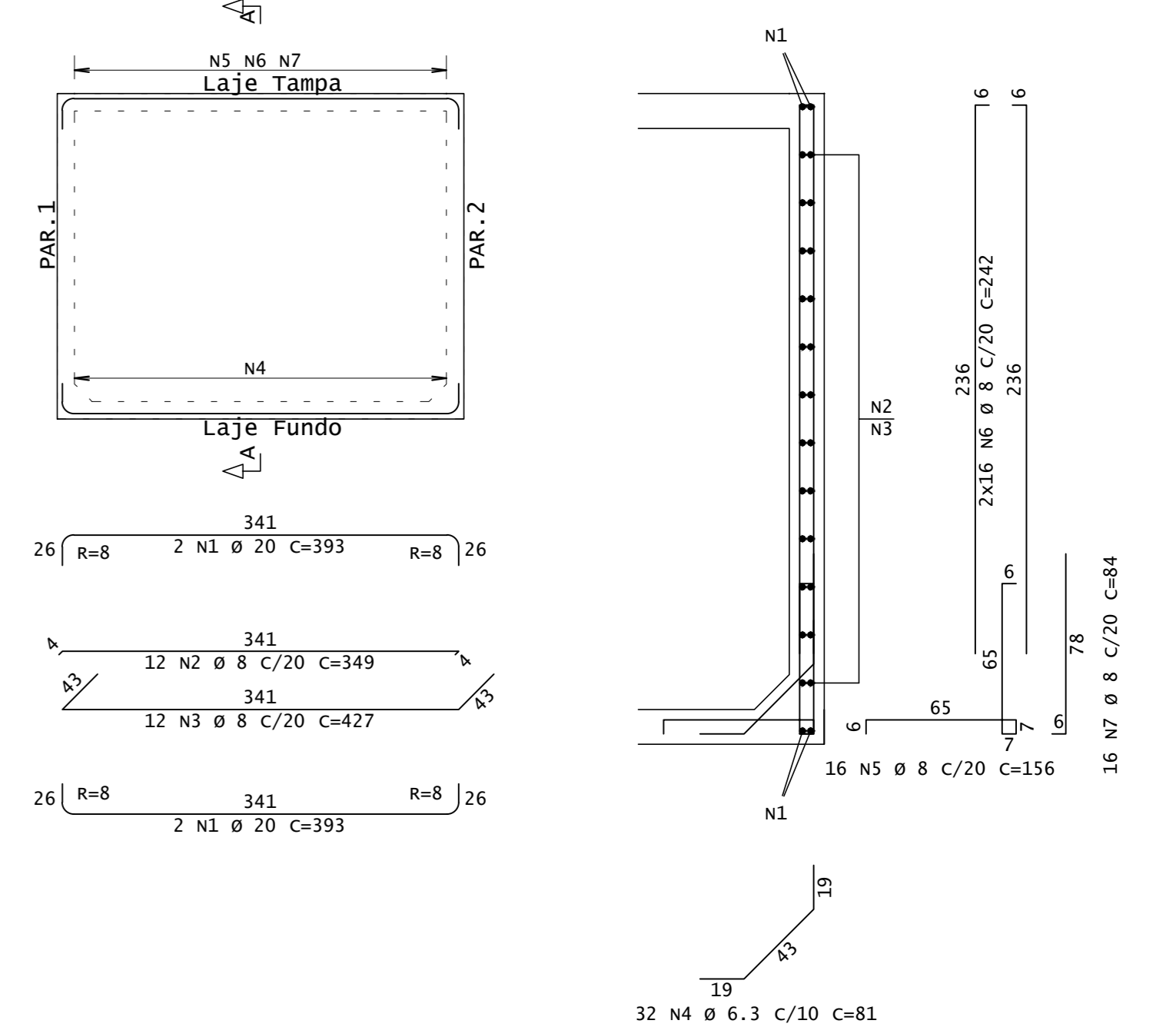


**ARM.DAS MÍSLAS VERTICAIS (Planta)**



**PAR. 3** 15/280

**Corte A**



Fck= 30 MPa

ACO	POS	BIT	QUANT	COMPONENTO	TOTAL
				UNIT	
<b>ARMAÇÃO DO FUNDO DO RESERVATÓRIO</b>					
SOA	1	6.3	32	143	4576
SOA	2	8	16	143	2288
SOA	3	8	12	351	4212
<b>PAR. 1</b>					
SOA	1	20	4	181	732
SOA	2	8	12	139	1668
SOA	3	8	12	217	2604
SOA	4	8	12	76	2912
SOA	5	8	6	156	936
SOA	6	8	6	242	2904
SOA	7	8	6	84	504
SOA	8	8	8	286	1888
SOA	9	8	8	73	584
<b>PAR. 2</b>					
SOA	1	20	4	181	732
SOA	2	8	12	139	1668
SOA	3	8	12	217	2604
SOA	4	8	12	76	2912
SOA	5	8	6	156	936
SOA	6	8	6	242	2904
SOA	7	8	6	84	504
SOA	8	8	8	286	1888
SOA	9	8	8	73	584
<b>PAR. 3</b>					
SOA	1	20	4	181	1572
SOA	2	8	12	149	4188
SOA	3	8	12	427	5124
SOA	4	8	12	81	2592
SOA	5	8	16	156	2496
SOA	6	8	12	242	7744
SOA	7	8	16	84	1344
<b>ARMAÇÃO DA TAMPA DO RESERVATÓRIO</b>					
SOA	1	20	4	100	300
SOA	2	8	26	143	3718
SOA	3	8	12	131	1214
SOA	4	8	10	81	162
SOA	5	8	10	112	1214
SOA	6	8	10	2	88
SOA	7	8	10	15	264
SOA	8	8	10	353	1412
SOA	9	8	10	258	774
SOA	10	8	10	15	1404
SOA	11	8	10	257	771
SOA	12	8	10	90	270
SOA	13	8	10	158	632

RESUMO DE AÇO		
ACO	BIT	COMPOR
	m	kgf
SOA	6.3	88
SOA	8	832
SOA	20	46
<b>Peso Total</b>	<b>SÓA =</b>	<b>484 kgf</b>

**Universidade Federal do Maranhão**

Local: SÃO LUIS - MA  
 RUA ANTONIO RAYOL - CENTRO

Objeto do Serviço Técnico: PROJETO DE RESTAURAÇÃO E REQUALIFICAÇÃO DA FÁBRICA PROGRESSO MARANHENSE MUSEU ESCOLA E CURSO DE ARQUEOLOGIA

Área Técnica: ENGENHARIA  
 Disciplina: PROJETO ESTRUTURAL RESERVATÓRIO INFERIOR INCÊNDIO FORMAS E ARMADURAS DO RESERVATÓRIO COMBATE A INCÊNDIO

Data: JUN/2021  
 Escala: INDICADA

RESPONSÁVEL TÉCNICO: ENG. CIVIL MARIO A. CALHEIROS - CREAMA 7197/D  
 Revisão: 00  
 Planos: ÚNICA